



REVEL XC LANDSCAPE SYSTEM PRESETS WITH CROWN CDI DRIVECORE AMPLIFIERS

APRIL 14, 2018

Page 1 of 4

Overview

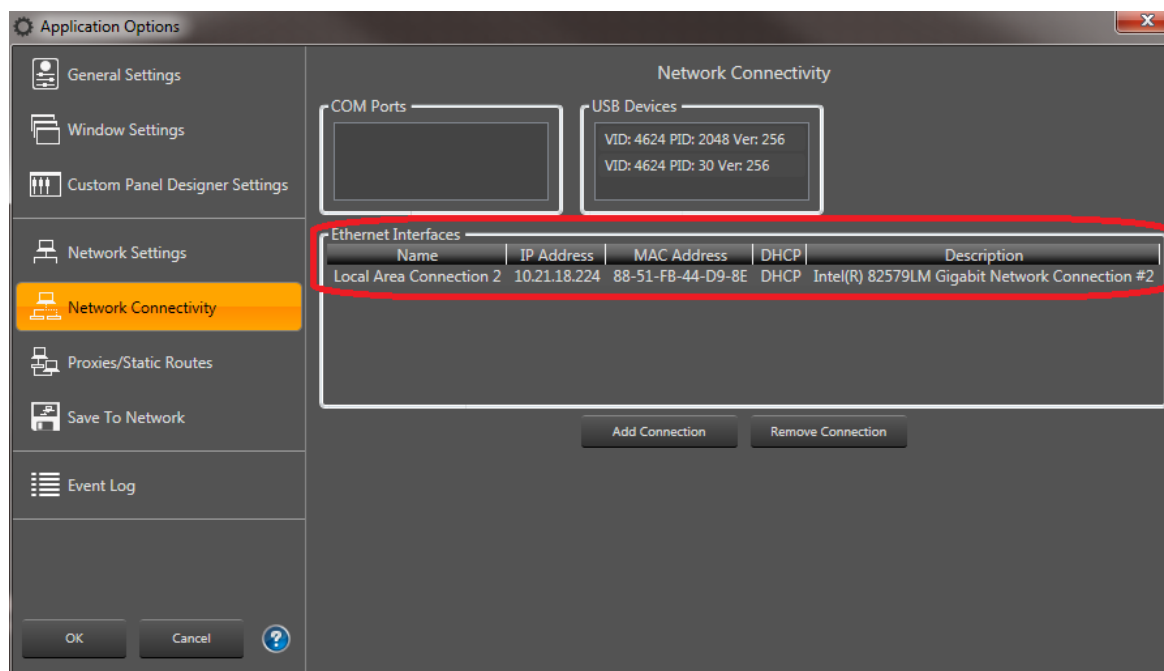
Crown CDi DriveCore power amplifiers can be configured for use with Revel Extreme Climate L41XC, L42XC, and L12XC Landscape series loudspeakers. The system Presets can be selected the control panel of Crown CDi DriveCore power amplifier using Harman HiQnet™ Audio Architect Software, version 2.15 or later. The software is available for download at: <http://audioarchitect.harmanpro.com/en-US/software>

Loading Device Files and Choosing a System Preset:

- 1.) Launch Audio Architect Software.

When Audio Architect is first loaded, the software will scan the network for HiQnet devices. All devices discovered on the network will be found under the ADD DEVICES tab in the Devices menu tree.

If the device is not found, the network may not be configured correctly. Verify your network settings in File > Application Options > Network Connectivity > Ethernet Interfaces. Verify your Local Area Connection is listed here. If your local network port is not listed, click “Add Connection” and choose the connection you are using to connect to the same network as the amplifier.



- 2.) In the Devices menu tree under “Discovered Devices”, select and drag the CDi amplifier name into the Room View – the large open space that occupies the center of the screen.



REVEL XC LANDSCAPE SYSTEM PRESETS WITH CROWN CDI DRIVECORE AMPLIFIERS

APRIL 14, 2018

Page 2 of 4

- 3.) Click the amplifier icon once to highlight, and click "Go Online" located at the top of the window.
- 4.) An "R" and "S" will appear on the amplifier icons. Click "R" for Receive (current settings).
- 5.) In the Room View, double click on the CDi amplifier icon to view the amplifier Control Panel.
- 6.) In the Control Panel window, go to: File > Open > Device File. Choose the applicable .Device file for your amplifier model (e.g. CDi2300_Revel Landscape).
- 7.) In the Control Panel window, click RECALL and choose the system preset that applies to your system as detailed in the Revel Outdoor Brochure.

System 1 Revel XC Small Satellite System			
CDi2 300			
Amp Channel	Speaker Model	70V/Low Z	Wiring Notes
1	L41XC (x2)	Low Z	Wired in Parallel
2	L41XC (x2)	Low Z	Wired in Parallel
IMPORTANT: Speakers must be set to BYPASS			

System 2 Revel XC Medium Subwoofer Satellite System			
CDi2 300			
Amp Channel	Speaker Model	70V/Low Z	Wiring Notes
1	L41XC (x6)	70V	30W Tap
2	L12XC	Low Z	
IMPORTANT: Subwoofer rock-style transformer is NOT used			

System 3 Revel XC Medium Bollard Satellite System			
CDi2 300			
Amp Channel	Speaker Model	70V/Low Z	Wiring Notes
1	L42XC (x4)	70V	60W Tap
2	L12XC	Low Z	
IMPORTANT: Subwoofer rock-style transformer is NOT used			



8500 Balboa Blvd. , Northridge, CA 91329

REVEL XC LANDSCAPE SYSTEM PRESETS WITH CROWN CDI DRIVECORE AMPLIFIERS

APRIL 14, 2018

Page 3 of 4

System 4 Revel XC Performance System Low Impedance			
DD8+			
Amp Channel	Speaker Model	70V/Low Z	Wiring Notes
1	L41XC	Low Z	Bypass Mode
2	L41XC	Low Z	Bypass Mode
3	L41XC	Low Z	Bypass Mode
4	L41XC	Low Z	Bypass Mode
5	L41XC	Low Z	Bypass Mode
6	L41XC	Low Z	Bypass Mode
7	L42XC	Low Z	Bypass Mode
8	L42XC	Low Z	Bypass Mode
CDi2 300			
1	L12XC	Low Z	
2	L12XC	Low Z	
IMPORTANT: Speakers must be set to BYPASS Subwoofer rock-style transformer is NOT used			

System 5 Revel XC Performance System 70-volt			
CDi2 600			
Amp Channel	Speaker Model	70V/Low Z	Wiring Notes
1	L41XC (x6) L42XC (x2)	70V	60W Tap
2	L12XC (x2)	70V	250W Tap



8500 Balboa Blvd. , Northridge, CA 91329

REVEL XC LANDSCAPE SYSTEM PRESETS WITH CROWN CDI DRIVECORE AMPLIFIERS

APRIL 14, 2018

Page 4 of 4

System 6			
Revel XC Party Subwoofer Satellite System - Pure Low Impedance System			
CDi2 300			
Amp Channel	Speaker Model	70V/Low Z	Wiring Notes
1	L12XC	Low Z	
2	L12XC	Low Z	
CDi4 300BL			
1	L42XC	Low Z	Bypass Mode
2	L42XC	Low Z	Bypass Mode
3	L42XC	Low Z	Bypass Mode
4	L42XC	Low Z	Bypass Mode
CDi4 300BL			
1	L42XC	Low Z	Bypass Mode
2	L42XC	Low Z	Bypass Mode
3	L42XC	Low Z	Bypass Mode
4	L42XC	Low Z	Bypass Mode
IMPORTANT: Subwoofer rock-style transformer is NOT used			

System 7			
Revel XC Entertainer Subwoofer Satellite System			
CDi4 300BL			
Amp Channel	Speaker Model	70V/Low Z	Wiring Notes
1	L41XC (x3)	70V	60W Tap
2	L41XC (x3)	70V	60W Tap
3	L41XC (x3)	70V	60W Tap
4	L41XC (x3)	70V	60W Tap
CDi4 300BL			
1	42XC (x2)	70V	60W Tap
2	42XC (x2)	70V	60W Tap
3	42XC (x2)	70V	60W Tap
4	Not Used	Not Used	Not Used
CDi4 300BL			
1	L12XC	Low Z	
2	L12XC	Low Z	
3	L12XC	Low Z	
4	L12XC	Low Z	
IMPORTANT: Subwoofer rock-style transformer is NOT used			